

PORIFERA & CNIDARIA

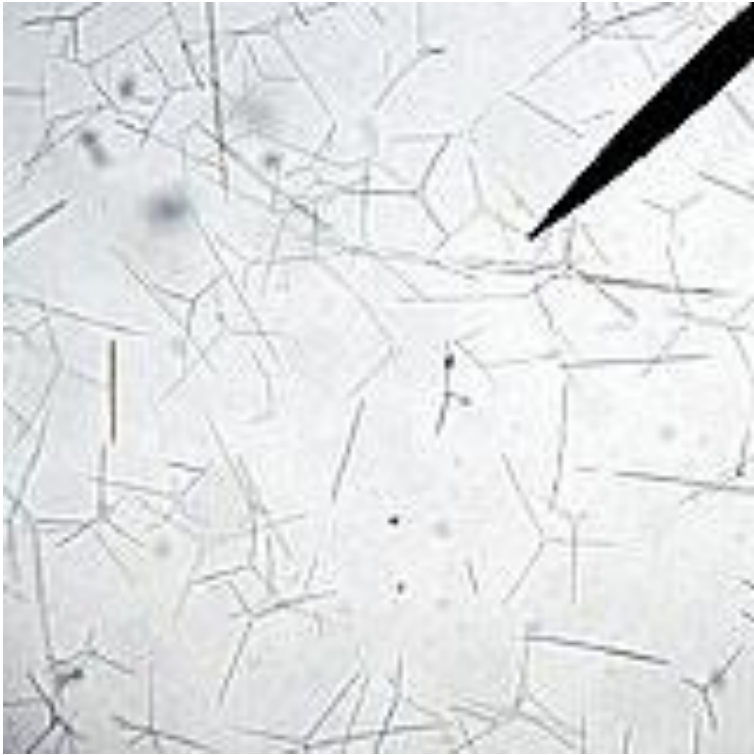
The answers will be shown when you click the mouse so
answer all the questions before you click

Phylum?

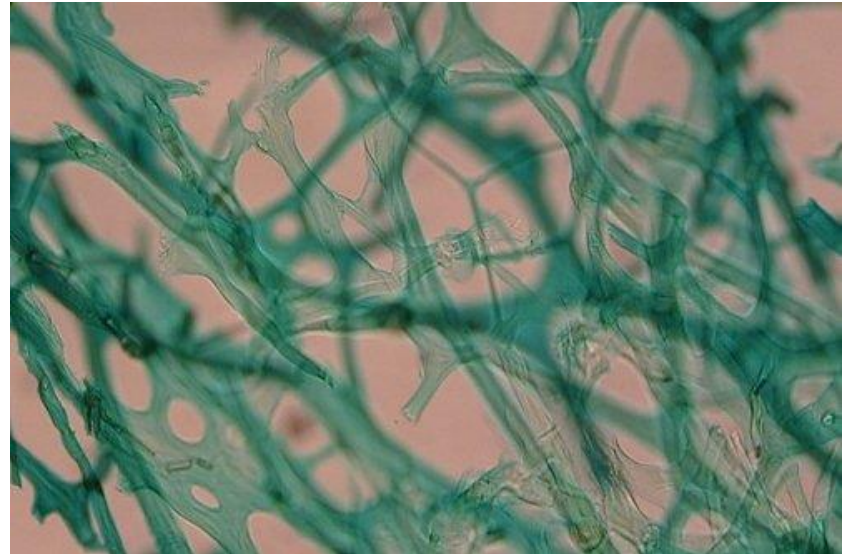


Porifera

What are these?

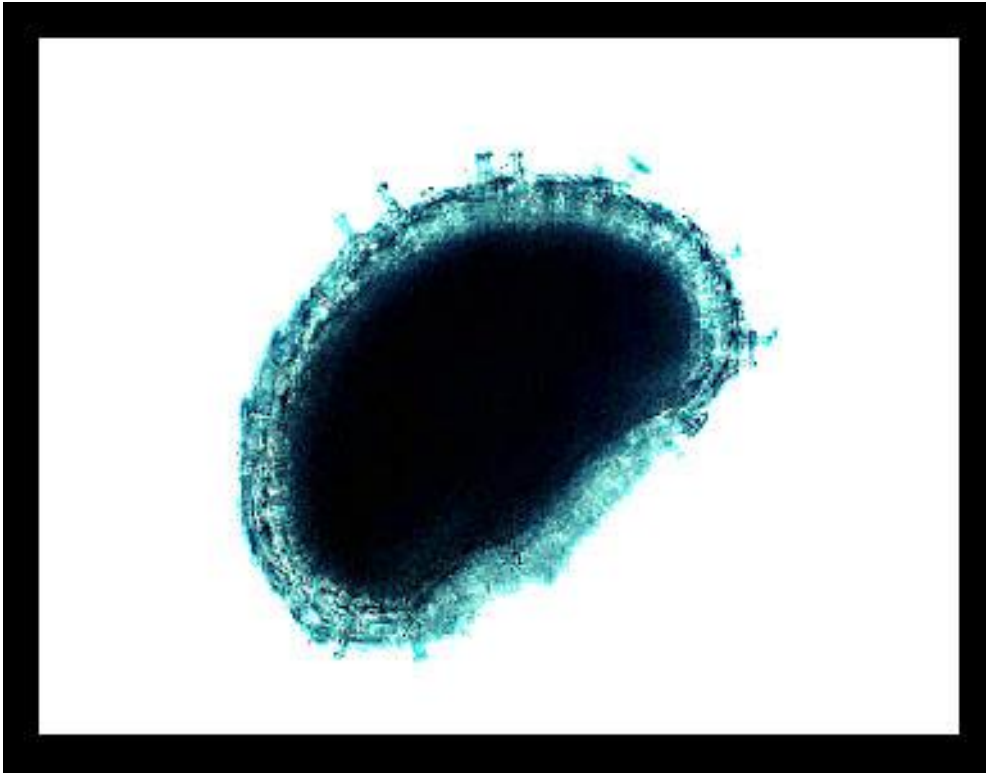


Spicules



Spongin

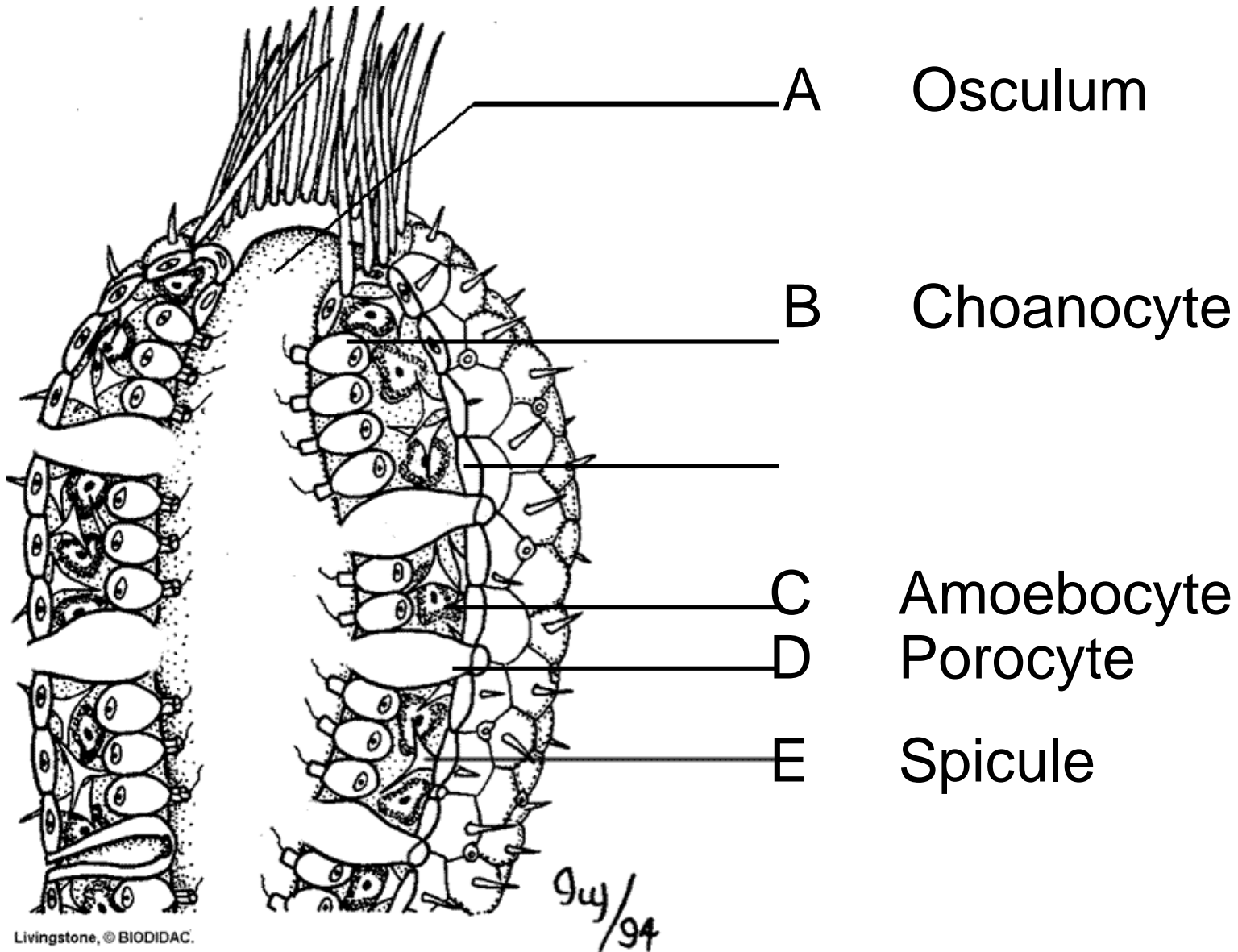
What is this?



Gemmule

- Used for asexual
reproduction in sponges

Name the structures (A-E)



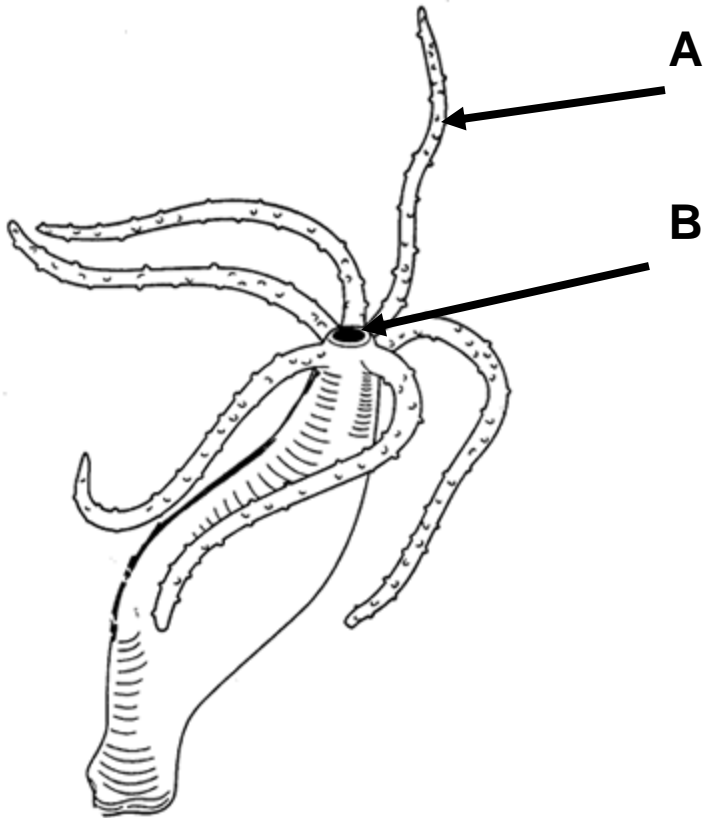
Fill in the blanks

Phylum Cnidaria

1. Class Hydrozoa

2. Class Scyphozoa

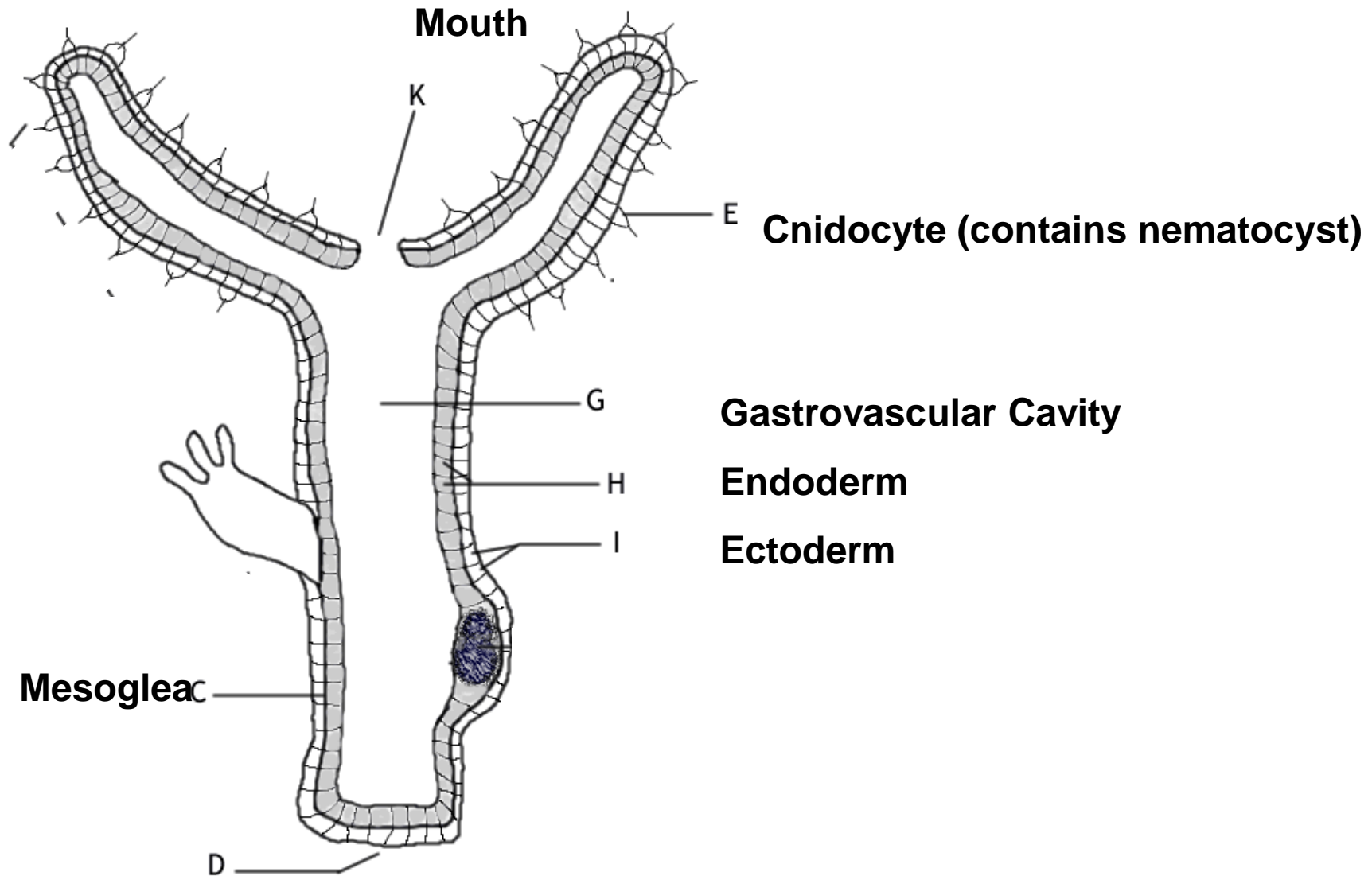
3. Class Anthozoa



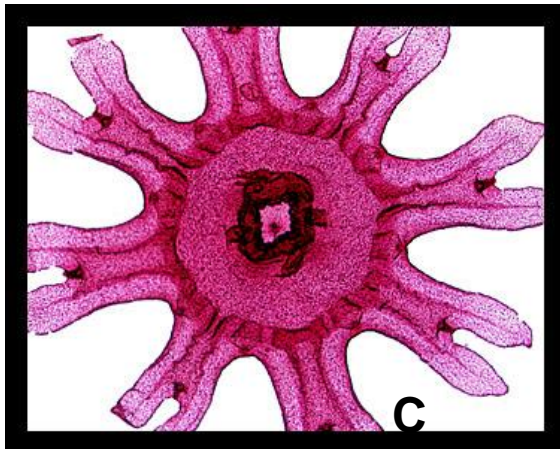
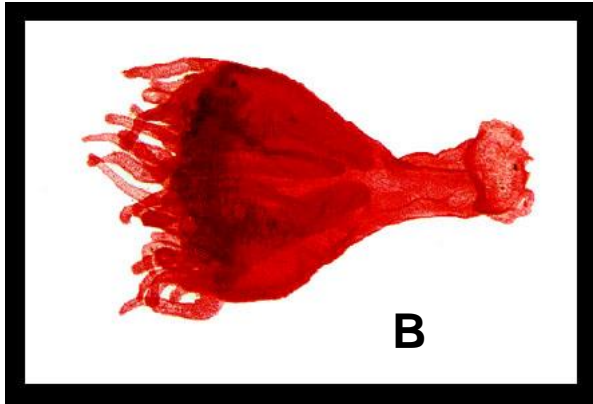
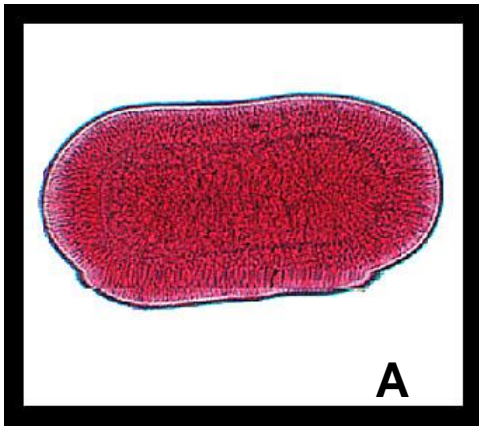
1. Phylum?
2. Class
3. Name the structures the arrows point to
4. What body form is this?
5. Common name?
6. Symmetry?

1. Cnidaria
2. Hydrozoa
3. A) tentacle B) mouth
4. Polyp
5. Hydra
6. Radial

Name these parts



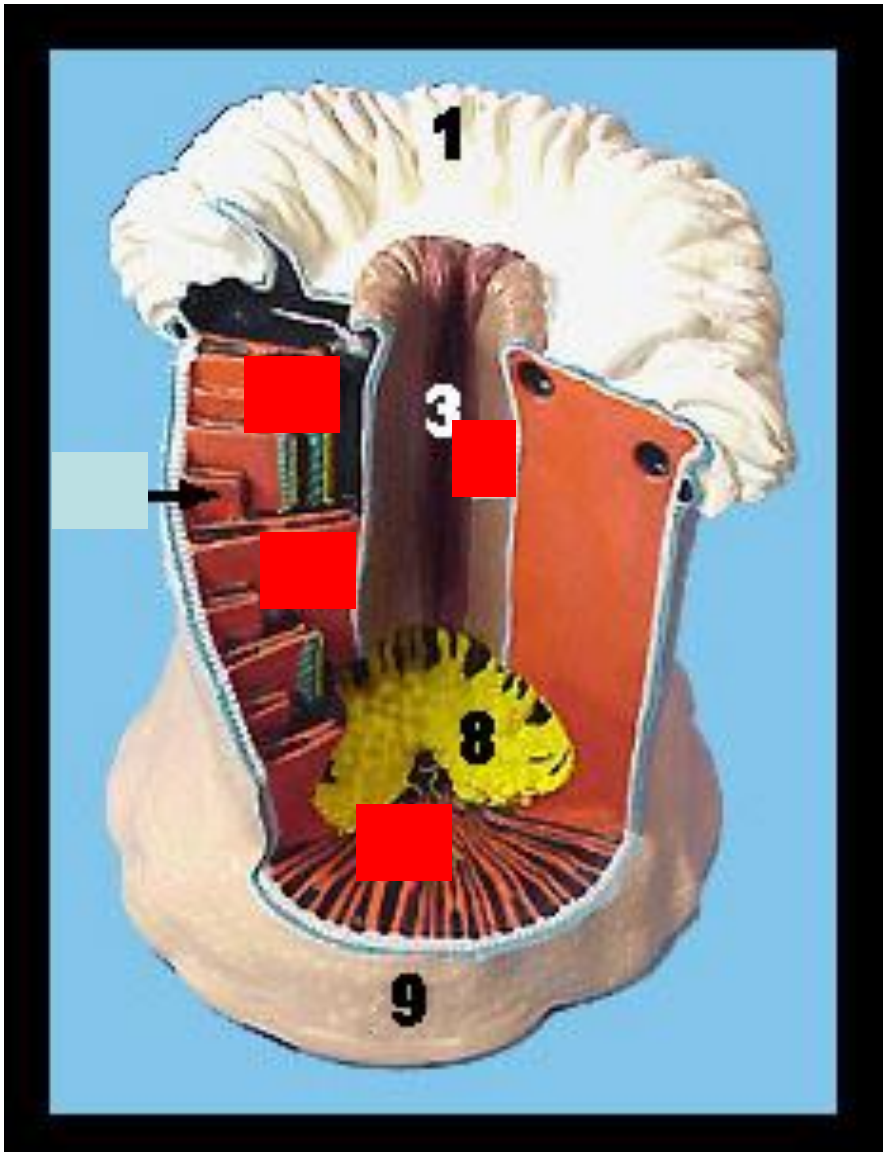
Life Stages



- **Phylum? Class?**
- **Names for life stages?**

- Cnidaria - Scyphozoa
- A) Planula larvae
- B) Scyphistoma
- C) Ephyra

Anthozoa - Metridium



- **Phylum?**
- **Class?**
- **Label parts**

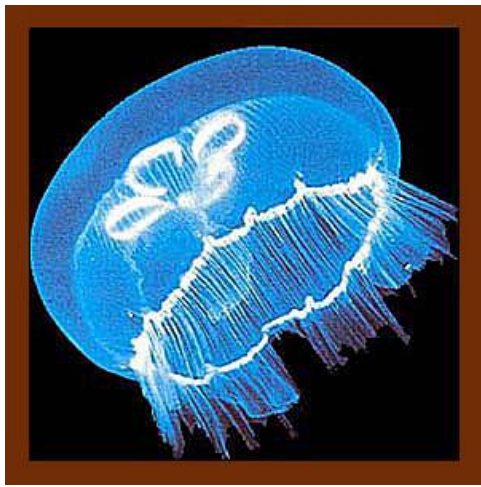
- Cnidaria
- Anthozoa

1 – Tentacles

3 – Pharynx

8 – Gastrovascular Cavity

9 – Pedal Disk



Phylum Cnidaria
Class Scyphozoa

Phylum? Class?



Phylum Cnidaria
Class Hydrozoa



Phylum Cnidaria
Class Anthozoa



Phylum Cnidaria
Class Hydrozoa



Phylum Cnidaria
Class Hydrozoa