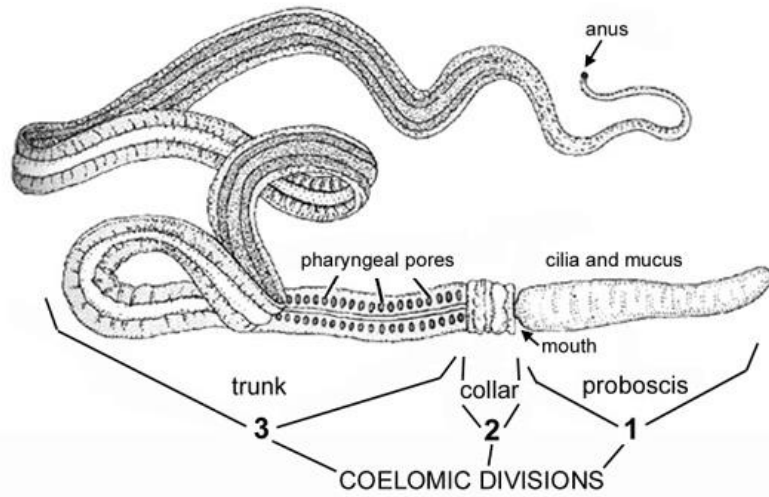


Hemichordata, Chordata

All answers will be revealed when you click, so answer all questions first

Phylum?

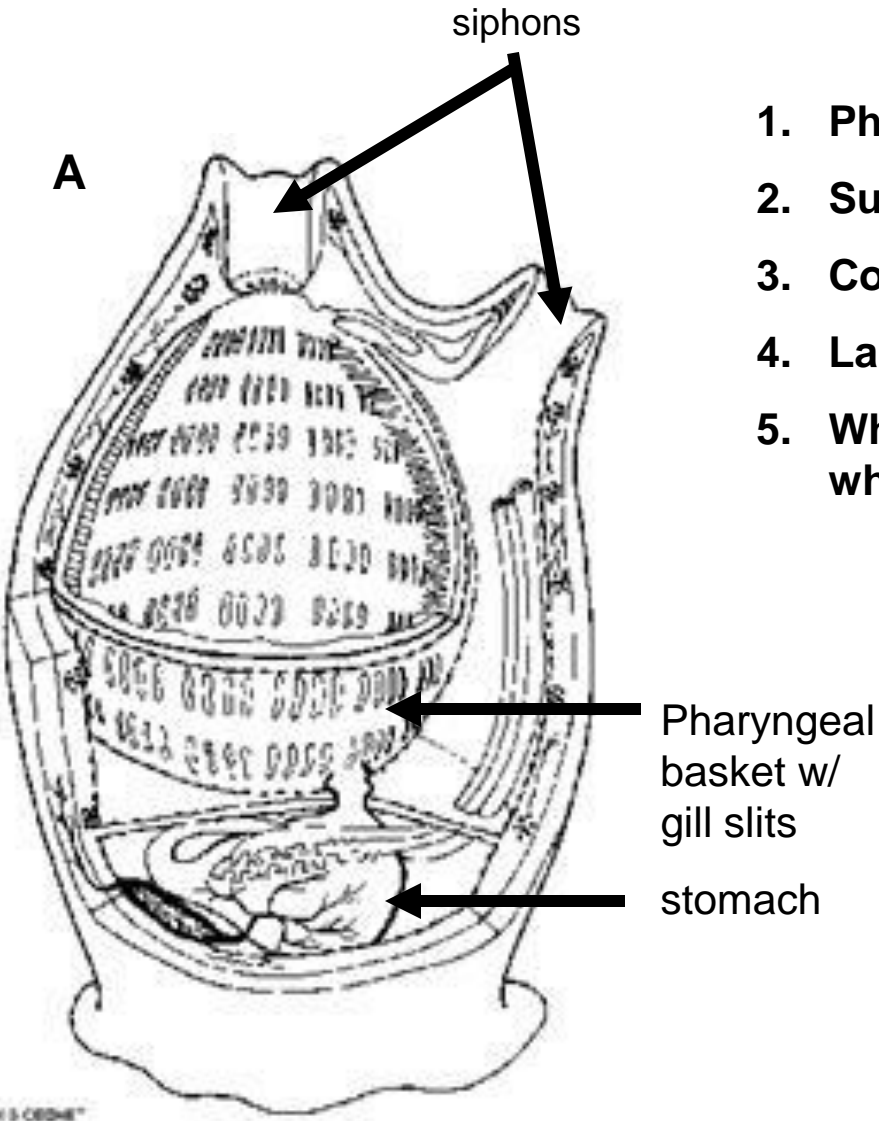


Phylum Hemichordata

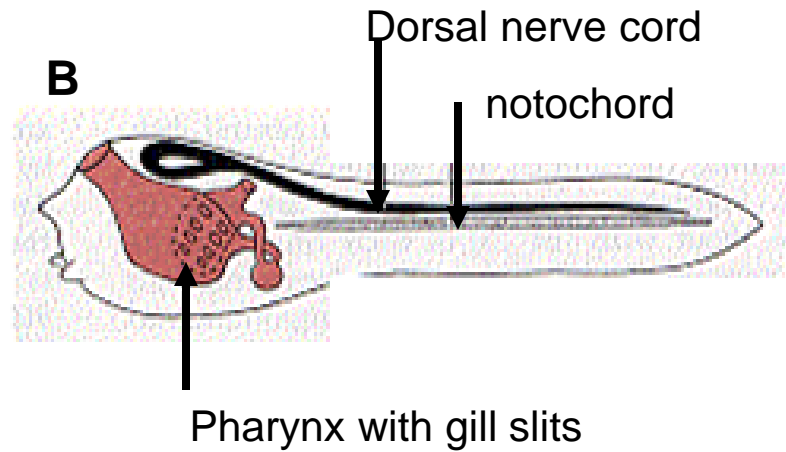
Fill in the blanks

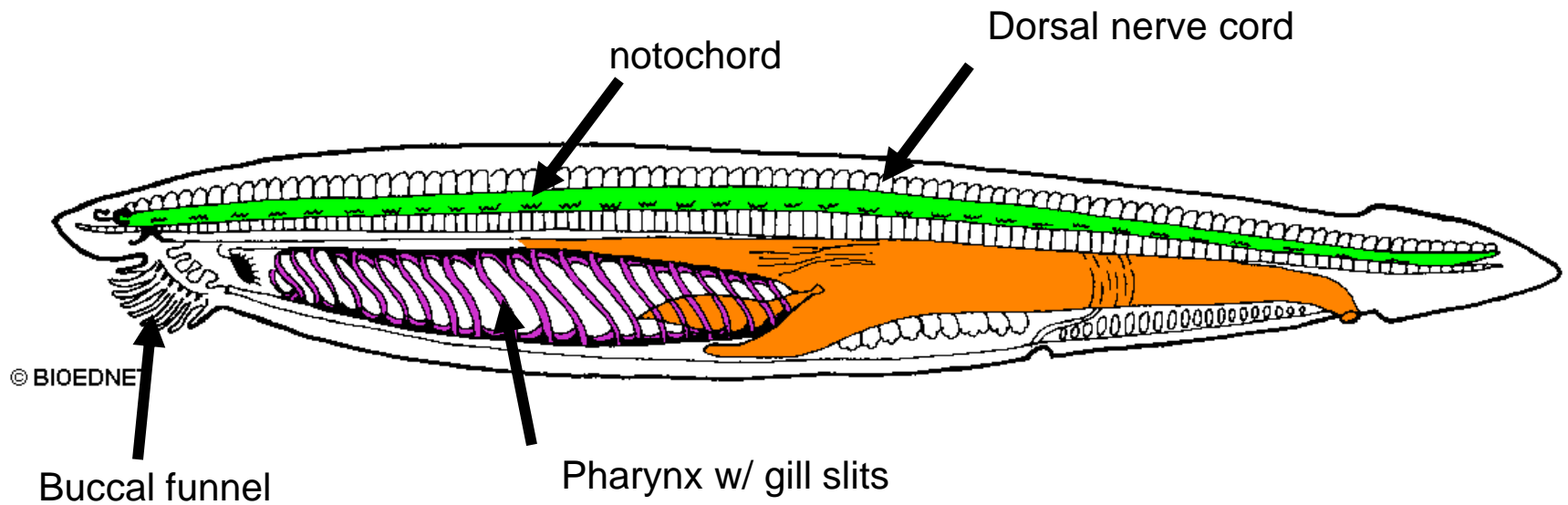
Phylum Chordata

1. Subphylum Urochordata
2. Subphylum Cephalochordata
3. Subphylum Vertebrata
 - a) Class Agnatha
 - b) Class Chondrichthyes
 - c) Class Osteichthyes
 - d) Class Amphibia
 - e) Class Reptilia
 - f) Class Aves
 - g) Class Mammalia



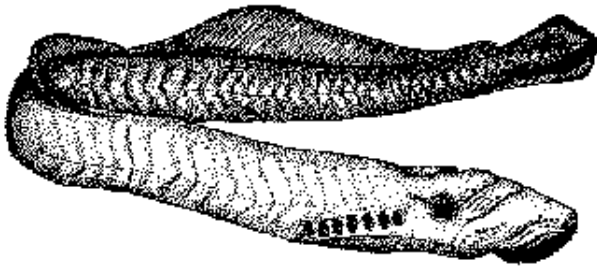
- | | |
|---|-------------------------|
| 1. Phylum? | 1. Chordata |
| 2. Subphylum? | 2. Urochordata |
| 3. Common name | 3. Tunicate |
| 4. Label parts | 4. A) mature, B) larval |
| 5. Which is larval, which is mature? | |



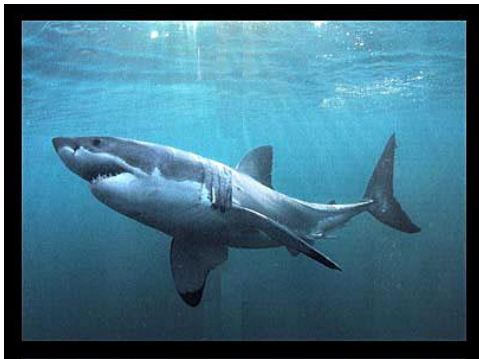


- | | |
|----------------|--------------------|
| 1. Phylum? | 1. Chordata |
| 2. Subphylum? | 2. Cephalochordata |
| 3. Common name | 3. Lancelet |
| 4. Label parts | |

Phylum? Subphylum? Class? Common Name?



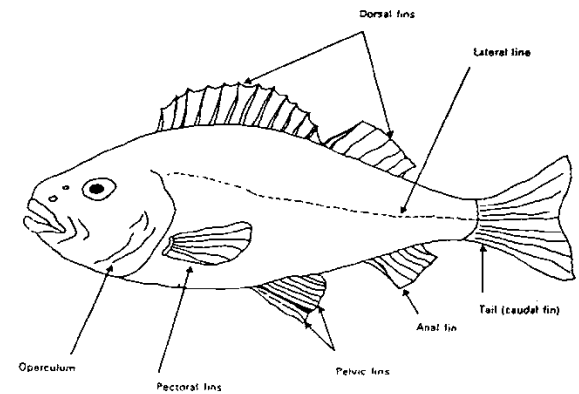
Phylum Chordata
Subphylum Vertebrata
Class Agnatha
lamprey



Phylum Chordata
Subphylum Vertebrata
Class Chondrichthyes
shark

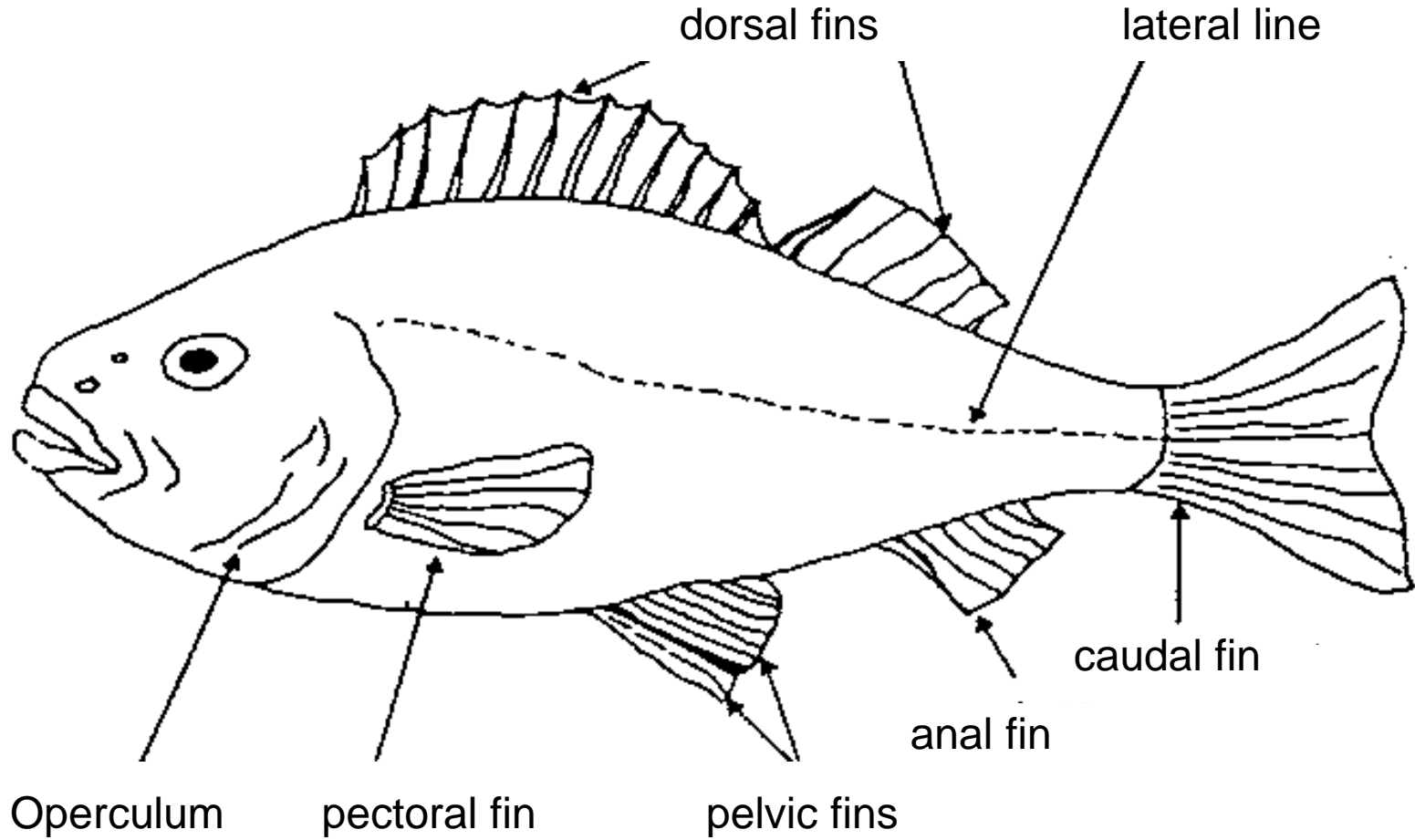


Phylum Chordata
Subphylum Vertebrata
Class Chondrichthyes
skate



Phylum Chordata
Subphylum Vertebrata
Class Osteichthyes
Bony fish

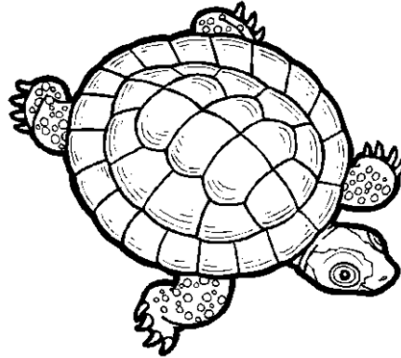
Label the parts



Phylum? Subphylum? Class?



Phylum Chordata
Subphylum Vertebrata
Class Amphibia



Phylum Chordata
Subphylum Vertebrata
Class Reptilia



Phylum Chordata
Subphylum Vertebrata
Class aves



Phylum Chordata
Subphylum Vertebrata
Class Reptila



Phylum Chordata
Subphylum Vertebrata
Class mammalia